



Welcome

Welcome back, We hope you had a safe and enjoyable Christmas and holidays.

We are very excited for the First Term of OSHC, and we hope all new students settle in well.

Term Goals

- OSHC Indoor plants
- Child focused program
- Becoming culturally aware



Hours Of Operation

Before School Care	6:30am-8:30am
After School Care	3pm – 6pm
Vacation Care	6:30am – 6pm
Pupil Free Day	6:30am – 6pm

Oshe Staff



Karina



Amalia



Abbey



Megan



Khush



Silvia



Sahera



Monique

Vacation Care highlights



Dates for the next upcoming Vacation Care

July school holidays is Monday 15th April – Friday 26th April.

If anyone has any ideas or suggestions for future vacation care activities, we are always looking forward to trying new things!! Please email or talk to one of our staff. Please ensure that children bring their drink bottles every day to vacation care, and on excursions they are wearing enclosed shoes (no crocks or slides).

ALL ABOUT OUR OSHC EDUCATORS



Hi, my name is Abbey Mitchell and I have been the assistant Director at St Gabriel's OSHC for 6 months.

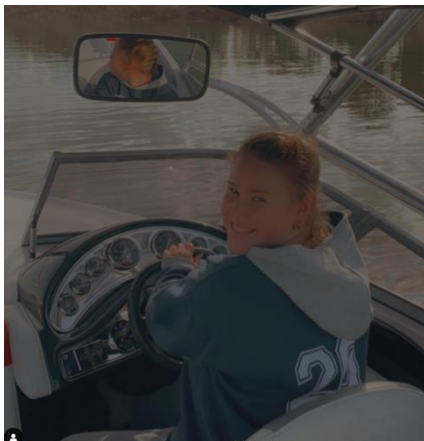
I started working in OSHC 3 years ago, but I have been working with children since I was 14 in 2016 as an assistant swimming instructor. I have worked in 3 different OSHC's and have gained lots of experience through my many interactions with children both as an OSHC educator and swimming instructor.

I love working with children and always have since I was little. I believe that I can help children become the best they can through supporting them in the oshc environment.

Some interesting facts about me is I have travelled all around Australia by car with my family and been to every state in Australia. I have also travelled to America, New Zealand, Italy and Dubai.

I am very fortunate to have the opportunity to study at the University of South Australia and study a Bachelor of Primary Education. I am currently in my third year and hope to graduate in 2025.

In my free time I love spending time at my house along the Murray River and participating in water sports on the river.



Child Care Subsidy: (CCS)

If you are a family who only use Vacation Care, please make sure you have your parent code and password ready to sign in on arrival and when collecting your child in the afternoon. Also, after 8 weeks of not using the centre, Centrelink will cease your account. When you book into next vacation care and are claiming CCS you will need to re confirm with My Gov, to be able to receive the subsidy.

Child Behaviour Policy

St Gabriel's OSHC is passionate about creating a safe, inclusive, and supportive environment that enables students to express themselves in a positive way that is supported by all staff and the school community. Positive student behaviour is essential to promote positive learning environments and positive peer relationships.

Students who physically injure other students, bring emotional harm to others, or verbally abuse others including staff will need to leave the service for 24 hours.

Students who try and exit the school grounds will not be allowed to attend the service for the remainder of the day.

OSHC Program



Before School Care

A child during free play and taking interest in dolls and cars. This was showing her development in solitary play where she was playing alone and developing new motor and cognitive skills.

Learning outcome -

Children and young people have a strong sense of wellbeing



After School Care

Children took part in a STEM activity, where they made flowers out of paper and decorating with coloured pencils before placing them in water and watching the petals of the flowers open.

Learning Outcome –

Children and young people are confident and involved learners

BOOKINGS AND CANCELLATIONS

Bookings and cancellations must be made via:

- Online booking system – 'FullyBooked'

Bookings:

- All students MUST be booked into OSHC
- Bookings can be permanent or casual
- Morning bookings must be made by 6:00pm the night before.
- Afternoon bookings must be made by 11:00am that day.

Cancellations:

- Morning bookings must be cancelled by 6:00pm the night before.
- Afternoon bookings must be cancelled by 11:00am that day.

This ensures that we have adequate staffing and food for each session.

Following child safety policy and procedures we also ask that if your child/children are booked in for the morning service, that a parent/caregiver comes inside to sign them in. It is the parent/caregiver's responsibility to bring and sign their child/children in. If students are not attended by a parent/caregiver, then a fee of \$2 will be charged.

Fees for 2024

7:00am-8:30am

- Permanent \$14
- Casual \$17

3:15pm-6:00pm

- Permanent \$25
- Casual \$28

VacationCare

- Incursion \$70
- Excursion \$80
- Pupil Free Day \$70

Please note that children are NOT to be dropped off before 7:00am for the morning session- the gate will be locked until 7:00am.

Please note our service concludes at 6:00pm each afternoon. There is a fee of **\$1 per minute** for pickups after 6:00pm.

Breakfast

Please note that breakfast is available on request up until **8:00am**. It is assumed that anyone arriving after this time has had breakfast at home. While OSHC staff do ask the general group who would like breakfast, please encourage children to ask when they arrive.

Homework

Students are encouraged to complete homework during OSHC time however, it is not the responsibility of staff to ensure homework is completed. If you would like your child/children to start their homework during OSHC, please advise staff.

Toys/Personal Items

We ask that students do not bring toys or other personal items into OSHC as we take no responsibility if toys/items are lost or damaged. This is now including fidget toys as they are being lost, damaged or not used appropriately. If students wish to use fidget toys for wellbeing reasons, they may ask an OSHC staff.

Communication

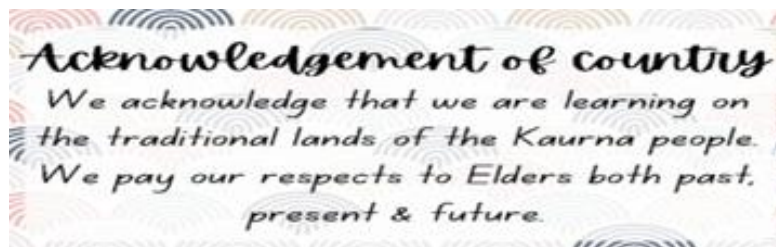
Should you have any queries or concerns please do not hesitate to contact me through our OSHC email. Our friendly staff are in the OSHC room during morning and afternoon care times should you wish to communicate directly in person or over the phone.

Communication between families and OSHC staff members can be undertaken via email, phone, SMS and face to face conversations during OSHC hours.

Email: oshc@sgs.catholic.edu.au

OSHC direct line: 8216 9911 (During OSHC Service Hours or leave a message)

App: Download the app (Seesaw) and let us know if you need to be added to our OSHC group



The OSHC team and I look forward to another great term!
Karina Carman – St Gabriel's OSHC Director